



THREE BEDROOM MID  
TERRACED VILLA

GAS CENTRAL HEATING

CUL DE SAC LOCATION

REAR GARDENS

Taylor Street, Alexandria, G83 0JY

EVE Property are pleased to introduce to the open sales market a lovely three bedroom terraced villa in the rarely available Taylor Street, Alexandria. Positioned in a cul-de-sac nestled amongst similar style residential properties, this generously proportioned house will be of significant appeal to buyers looking to settle in the area and we therefore anticipate plentiful interest - call our friendly sales team today to schedule your viewing appointment!

Offers Over £104,995



## Property Description

Number 11 enjoys the best of both worlds whereby tranquillity borders a wealth of amenities, transport options and all the delights Balloch offers just a few minutes away.

This family home has been with the same custodians for many years and has been lovingly cared for and upgraded with quality fixtures throughout their period of ownership. An opportunity now presents itself for new homeowners to curate their own contemporary abode.

Slightly elevated from the kerb, the front gardens provide the welcoming backdrop, with access via glass panelled upvc door to the hallway with all apartments and staircase off. To the left, a pantry with access to the kitchen provides excellent additional storage, with glass doors giving entry to the kitchen.

To the right, an abundantly dimensioned dual aspect living room enjoys open aspects to the front and rear gardens from the large picture windows either side - a beautiful space illuminated with natural light. A feature living flame fire surround dressed with an oak mantle and light cream marble hearth provides a lovely, cosy warmth for those cold nights in! With adequate space for modern furnishings to include a dining suite if desired, ensures this is a perfect spot to relax and entertain in equal measure.

Off the living room, further access to the dining kitchen opens to showcase ample wall and base mounted cabinetry in light cream and oak and topped with dapple effect cream work surfaces.





Dark oak laminate flooring and ceramic splashback tiling ensure ease of maintenance, with a stainless steel one and half inset sink, drainer and mixer tap and white four burner electric hob with matching oven ensuring the cook of the house has all they need for dinner!

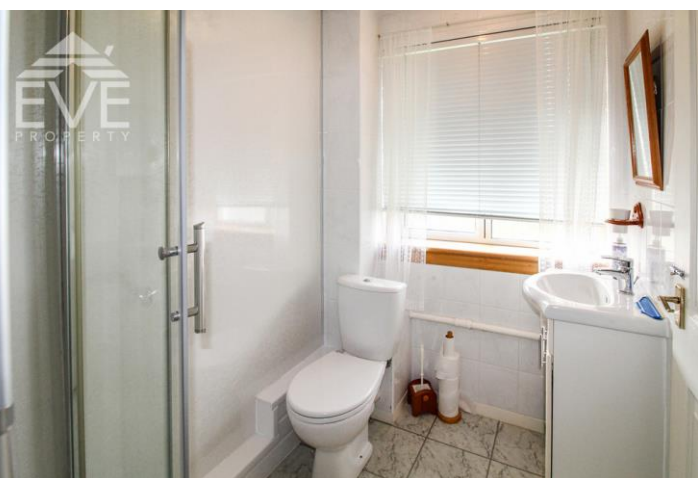
Upstairs, the three double bedrooms enjoy uninterrupted views to the front and rear gardens, with all able to accommodate contemporary furniture without compromising the sense of space.

The shower room completes the internal specification with quadrant enclosure and electric power shower over, dual flush w.c and vanity sink providing handy storage under and bound with porcelain tiling to the walls and floor.



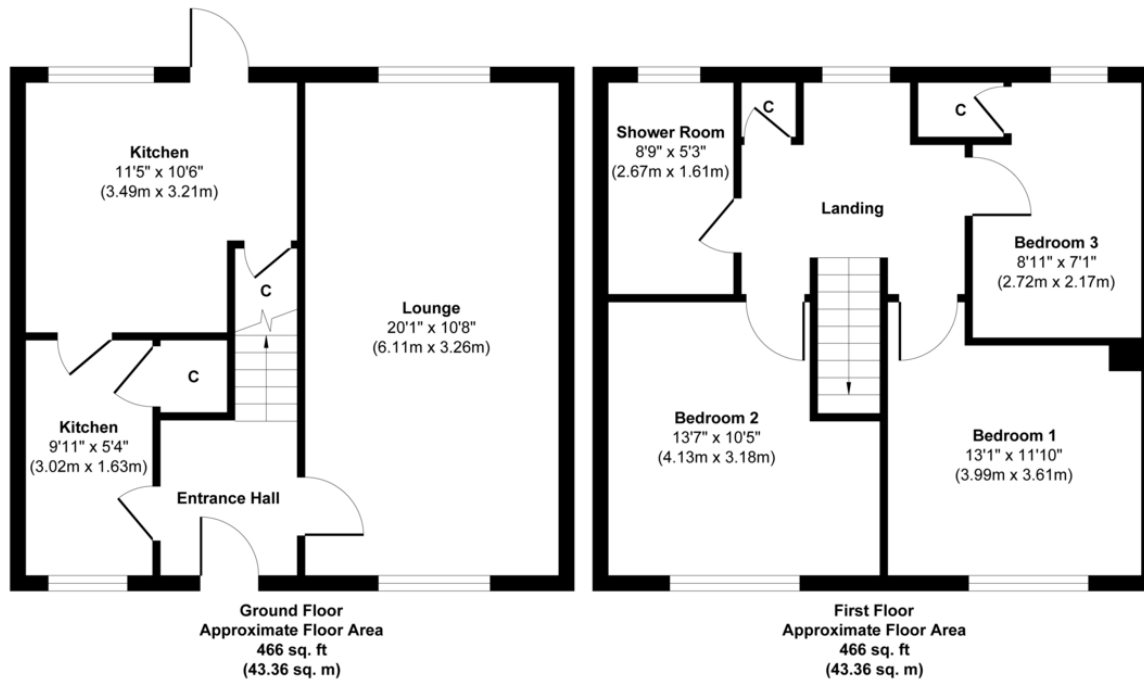
A large level drying green to the back laid mainly to lawn is a useful inclusion to this family home!

In summary, this is a wonderful, exceptionally well cared for villa in a fabulous location and will prove popular with a variety of buyers - call our friendly team today to avoid missing out!



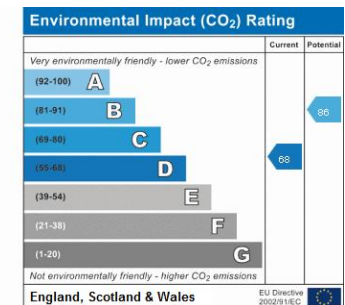
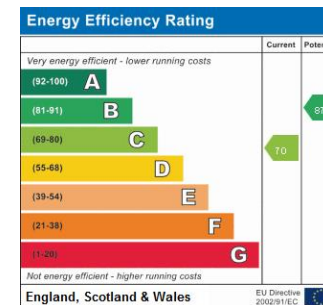
Taylor Street is a quiet cul-de-sac within walking distance to Loch Lomond Shores, Balloch Country Park, Alexandria town centre and Vale of Leven Hospital. It is set between Balloch and Alexandria Rail Stations offering a convenient commute to Glasgow City Centre. A82 is a short drive away offering road links to M8, Erskine Bridge, Glasgow Airport, Helensburgh and Faslane Naval Base.

11 Taylor Street, Alexandria, G83 0JY



Approx. Gross Internal Floor Area 932 sq. ft / 86.72 sq. m

Illustration for identification purposes only, measurements are approximate, not to scale.  
Produced by Elements Property



1 Herschell Street, Anniesland,  
Glasgow, Lanarkshire, G13 1HR

www.eve-property.co.uk  
0141 255 0020  
hello@eve-property.co.uk

Agents Note: Whilst every care has been taken to prepare these particulars, they are for guidance purposes only. All measurements are approximate are for general guidance purposes only and whilst every care has been taken to ensure their accuracy, they should not be relied upon and potential buyers/tenants are advised to recheck the measurements