



BEAUTIFULLY PRESENTED
GROUND FLOOR APARTMENT

NEWLY FITTED MODERN
KITCHEN WITH INTEGRATED
APPLIANCES

BATHROOM AND ENSUITE
SHOWER ROOM

Oakburn Walk, Jamestown, Alexandria, G83 9NJ

Offers Over £143,995

EVE Property are delighted to introduce to the open sales market an immaculate two bedroom ground floor apartment in the highly desirable Oakburn Walk, Alexandria. Set in a peaceful enclave with no passing traffic, this beautifully presented flat is generously proportioned and dimensioned throughout and will be of significant interest to a wide range of buyers looking to settle in the area - as such we would encourage registering early interest to avoid missing out!



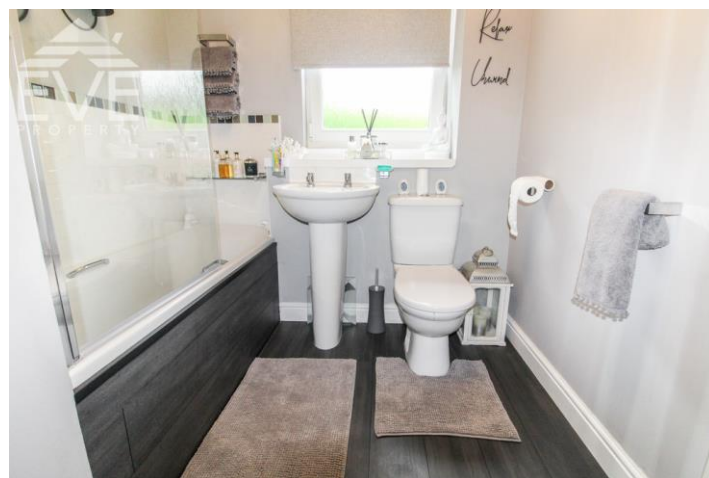
Property Description

Properties in this development rarely come to market and scarcely one in standout condition like this one. The vendors have thoughtfully meticulously and tastefully upgraded the fixtures and decor to create a comfortable haven to retreat to at the end of a long day. Set in enclosed, perfectly manicured communal gardens with lawns and light shrubbery, this Turnberry Built modern flat is encased in a honey brick and crisp white render combination, setting the tone for the secure entry close and the apartment itself.

Upon entering, it's clear to see the current owners take great pride in maintaining their beautiful property, with the hallway decorated in en-trend grey walls and quality laminate flooring providing a warm welcome to all who visit. The flooring continues to the kitchen and bathroom providing a clean, seamless look and flow.

The fully integrated kitchen has been recently fitted and is a real treat to behold! Curated with contemporary minimalism, a selection of wall and floor mounted cabinetry finished in mid-grey gloss and topped with black laminate work surfaces and a high gloss acrylic splashback in light grey, gives the space an uncluttered, linear look and finish. The kitchen is fully equipped with an integrated larder fridge freezer, dishwasher and washing machine providing convenience, with a black five burner gas hob with matching extract canopy and eye level double oven ensures the cook of the house has all they need for their culinary adventures! The black sink with matching mixer over is set at the window which bestows lovely views of the development!





Within the front facing living room, there is ample space for modern furnishings without compromising the space on offer. A Parisienne balcony with large fully glazed doors supplies a swathe of natural light, further accentuating the generous proportions the living room offers - a wonderful place to relax or entertain in equal measure!

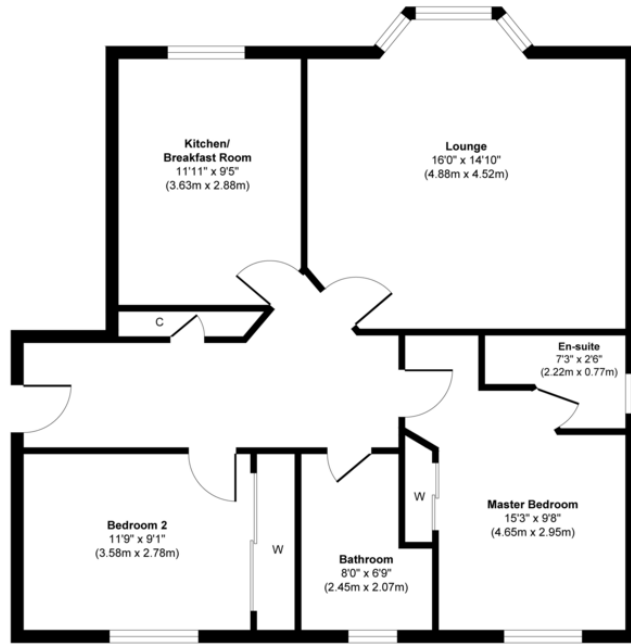
Both bedrooms are double in size and enjoy a tranquil retreat for weary bodies to unwind after a busy day. Both come with built-in wardrobes and large picture windows with views of the rear grounds. The master bedroom offers a striking en-suite, elegantly simple, the en-suite has a walk-in shower enclosure with electric shower, vanity unit and low flush w.c.

Allocated residents parking and secure communal areas are additional bonuses - schedule your viewing today with our friendly sales team to secure your dream home!

The bathroom completes the accommodation and includes a white three piece suite and shower over bath.

Oakburn Walk is perfectly located between Alexandria Town Centre and Balloch, offering excellent choice of local supermarkets and amenities. Local rail and bus stations are a short distance, offering public transport to Dumbarton, Loch Lomond, Helensburgh and Glasgow City Centre. Road links to A82 and M8 are within a short journey.

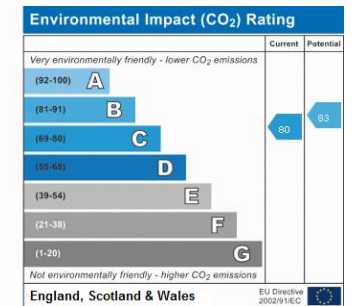
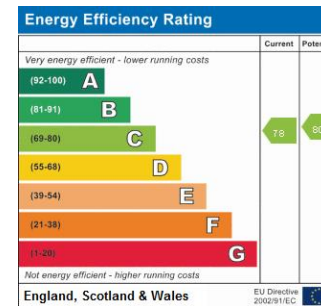
58 Oakburn Walk, Jamestown, G83 9NJ



Floor Plan
Approximate Floor Area
861 sq. ft
(80.02 sq. m)

Approx. Gross Internal Floor Area 861 sq. ft / 80.02 sq. m

Illustration for identification purposes only. Measurements are approximate, not to scale.
Produced by Elements Property



1 Herschell Street, Anniesland,
Glasgow, Lanarkshire, G13 1HR

www.eve-property.co.uk
0141 255 0020
hello@eve-property.co.uk

Agents Note: Whilst every care has been taken to prepare these particulars, they are for guidance purposes only. All measurements are approximate are for general guidance purposes only and whilst every care has been taken to ensure their accuracy, they should not be relied upon and potential buyers/tenants are advised to recheck the measurements